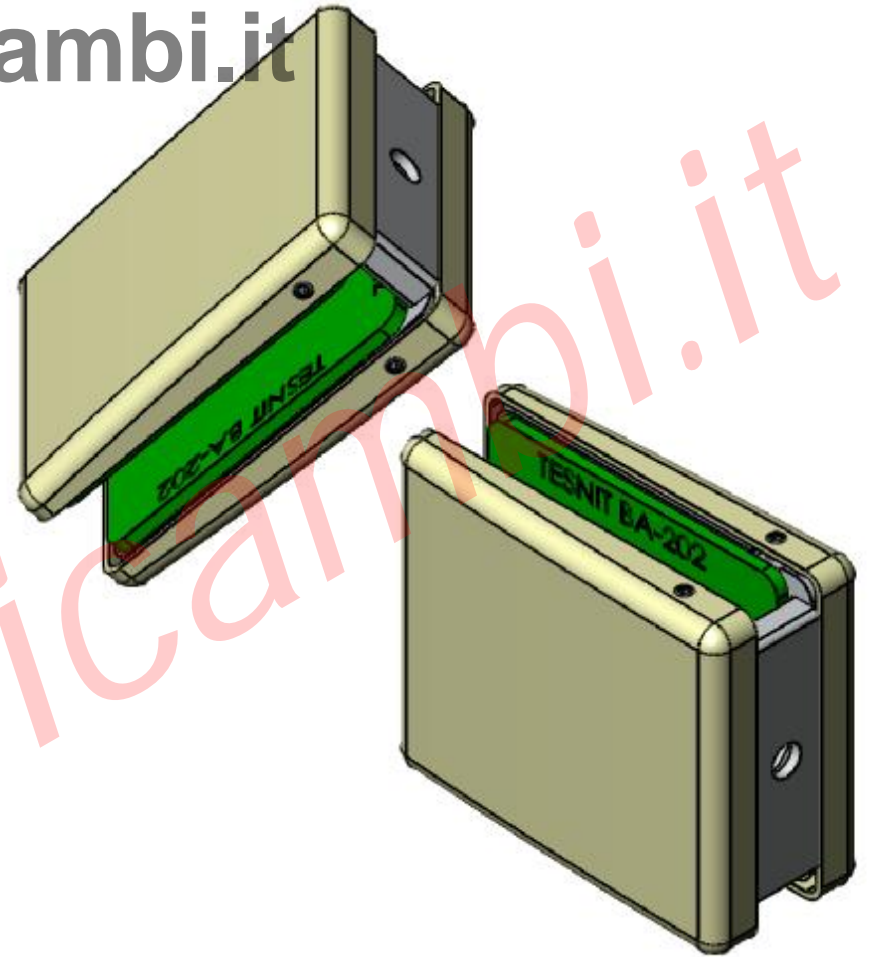
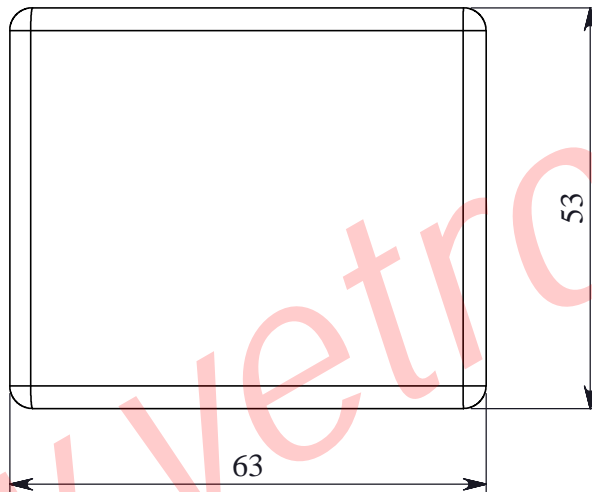
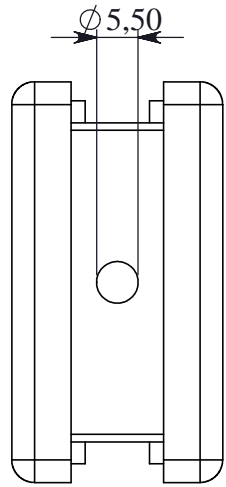
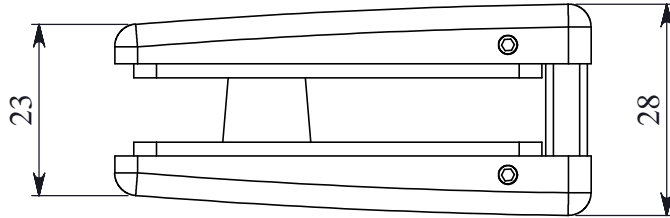


WGC

www.vetroricambi.it

Morsetto di Fermo Per Vetri Fissi
Clamp For Fixed Glasses



Vetro: 10-12 mm
Glass: 10-12mm

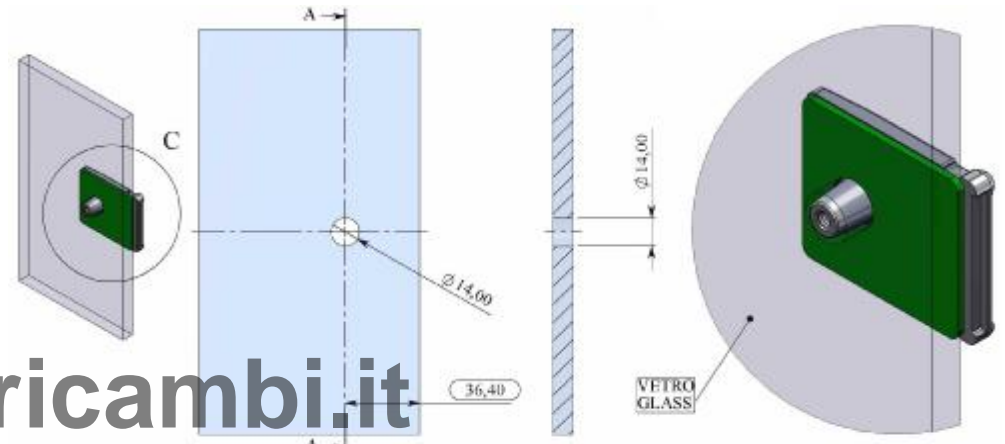
Finiture Superficiali Disponibili
Available Surface Finishing

- 1. Acciaio Inox LUCIDATO
- 2. Rivestimento PVD oro
- 3. Acciaio Inox SATINATO

- 1. POLISHED Stainless Steel
- 2. Gold PVD coating
- 3. SATIN Stainless Steel



Schema per Taglio Vetro
Glass Cut Scheme



www.vetroricambi.it